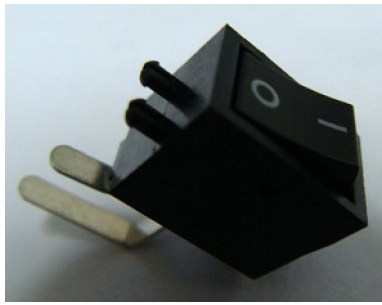




ROCKER SWITCH

SS01 SERIES



SPECIFICATION

Rating:16A 125/250VAC(CUL,CQC,NEMKO)

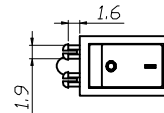
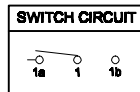
INITIAL CONTACT RESISTANCE:20mΩ Max

OPERATION FORCE:150±100gf

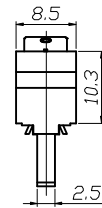
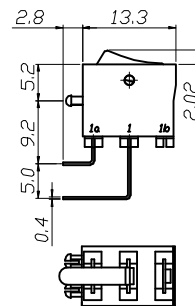
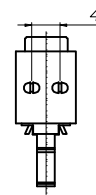
INSULATION RESISTANCE:100mΩ MIN 500VDC

WITHSTAND VOLTAGE:1000VAC FOR 1MINUTE

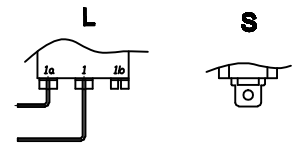
ENDURANCE:10,000CYCLES



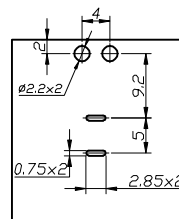
| TERMINAL TYPE | | |
|---------------|-----------|--|
| L | PC TYPE | |
| S | SOLDERING | |



Terminal list

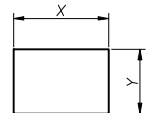


| CURRENT CIRCUIT | | | | |
|-----------------|----|---|-----|------|
| | | | | |
| 20 | ON | - | OFF | SPST |
| 30 | ON | - | ON | SPDT |



HOUSING TYPE:PC IN PANEL

| panel thickness. | Dim.X | Dim.Y |
|------------------|-------------|-----------|
| 0.75 to 1.25mm | 13.8*0/-0.1 | 8.2*0.1/0 |
| 1.25 to 2mm | 13.7*0/-0.1 | 8.2*0.1/0 |
| 2 to 3mm | 13.8*0/-0.1 | 9.2*0.1/0 |



HOUSING TYPE:SNAP IN PANEL

SS01 SERIES ORDERING SYSTEM

